

**Major Distribution Restoration Activities  
With Work Descriptions**

**Figure 1** below depicts a damaged pole being changed. The scenario in the figure is of a pole that is broken in the middle. The cross-arm and conductors are still attached to the top of the pole.



**Figure 1 - Crew replacing a broken pole**

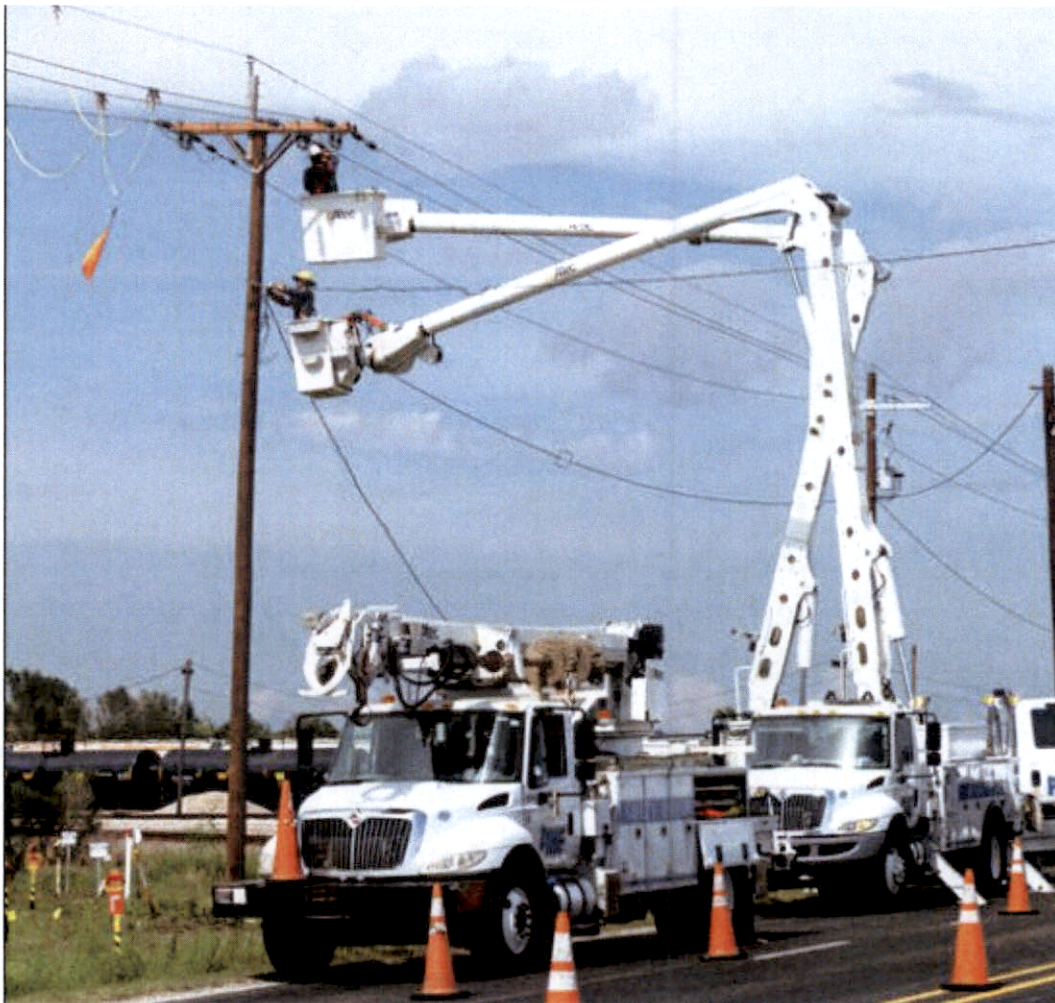
**The following are the steps required to repair this structure:**

1. Damage Assessment teams scout the line and identify damage and materials required to repair the section.
2. Crew is sent to site, where they set up their worksite, initiate traffic control, and secure the area for public and worker safety.
3. Crew holds a “tailboard” meeting where they assess job safety and hazards, plan the repairs, and give work assignments to each crewmember.
4. The crew obtains a clearance and performs the necessary switching and grounding of the section of line. Crew also isolates secondary conductors by pulling meters and opening possible sources.
5. Crew secures the top of the broken pole with digger-derrick.
6. The crew clears the immediate area of debris that would prevent them from carrying out the repairs and detaches joint-use facilities of other companies from damaged Entergy equipment.
7. Using digger-derrick, the crew removes the butt of the broken pole.
8. With that same truck, the crew reams out the pole hole with an auger.
9. They then set the new pole with its butt in the hole and its top through the conductors still attached to the old pole top held by digger-derrick.
10. They then backfill the hole, compacting the soil as they backfill.

**Major Distribution Restoration Activities  
With Work Descriptions**

11. Digger-derrick and the bucket truck are moved into position to place the cross-arm and pole hardware (frame the pole) on the pole.
12. The Linemen in the bucket then untie the conductor from the broken pole top and transfer them to the newly set and framed pole.
13. The old pole top is removed, the conductors are secured to the new insulators, and digger-derrick moves to straighten the adjacent pole.
14. All equipment and taps are reconnected.
15. Grounding equipment is removed, the clearance is released, and the section is energized.
16. The crew closes the worksite, returns traffic to normal controls, and moves to its next assignment.

**Figure 2** below depicts a broken cross-arm being changed. This work is required after a large limb has fallen on the conductors, breaking the cross-arm and cross-arm braces.



**Figure 2 - Crew replacing a broken cross-arm and cross-arm braces**

**Major Distribution Restoration Activities  
With Work Descriptions**

**The following are the steps required to repair this structure:**

1. Damage Assessment teams scout the line and identify damage and materials required to repair the section.
2. Crew is sent to site, where they set up their worksite, initiate traffic control, and secure the area for public and worker safety.
3. Crew holds a “tailboard” meeting where they assess job safety and hazards, plan the repairs, and give work assignments to each crew member.
4. The crew obtains a clearance and performs the necessary switching and grounding of the section of line. Crew also isolates secondary conductors by pulling meters and opening possible sources.
5. Crew removes old insulator, conductor tying materials, and other hardware and cleans up the site. Crew also works to move any equipment in a mechanical bind to ease repairs and prevent injury from stored mechanical energy.
6. Crew installs new cross-arm, cross-arm braces, insulators, insulator pins, and any other hardware needed.
7. Crew raises conductors into position on arm.
8. Crew places conductors on insulators and secure by tying them to the insulators.
9. Crew connects any equipment, ground wires, etc.
10. Grounding equipment is removed, the clearance is released, and the section is energized.
11. The crew closes the worksite, returns traffic to normal controls, and moves to its next assignment.

Figure 2 used above to describe changing a cross-arm can also be used to describe changing a transformer.

**The following are the steps required to replace the transformer:**

1. Damage Assessment teams scout the line and identify damage and materials required to repair the transformer.
2. Crew is sent to site, where they set up their worksite, initiate traffic control, and secure the area for public and worker safety.
3. Crew holds a “tailboard” meeting where they assess job safety and hazards, plan the repairs, and give work assignments to each crew member.
4. The crew obtains a clearance and performs the necessary switching and grounding of the section of line as needed based on the circumstances. Crew also isolates secondary conductors by pulling meters and opening any possible sources.
5. Crew removes the primary riser, secondary connections, and the ground connection from the failed transformer.
6. Lineman positions the job above the transformer and places a sling on the transformer.
7. He then loosens the hanger bolts securing the transformer to the pole or bracket.
8. Using his winch, he lifts the transformer from the hanger bolts and lowers it to the ground where it is secured.

**Major Distribution Restoration Activities  
With Work Descriptions**

9. The ground man places a sling on a new transformer that he has prepared for installation, and the lineman in the bucket lifts it into place.
10. Once in place on the hanger bolts, the bolts are tightened.
11. The lineman installs the ground connection, the secondary connections, and the primary riser.
12. The protecting device is re-fused.
13. Removal of grounds, releasing of clearances, and switching are performed if necessary.
14. All persons are verified to be in the clear.
15. The transformer is energized.
16. The voltage is checked.
17. The meters are reinstalled and sealed.

**Figure 3** below depicts a section of line in which multiple distribution poles were broken.



**Figure 3 - Crew repairing multiple spans of damaged line and poles**

**The following are the steps required to repair this structure:**

1. Damage Assessment teams scout the line and identify damage and materials required to repair the section.
2. Crew is sent to site, where they set up their worksite, initiate traffic control, and secure the area for public and worker safety.

**Major Distribution Restoration Activities  
With Work Descriptions**

3. Crew holds a “tailboard” meeting where they assess job safety and hazards, plan the repairs, and give work assignments to each crewmember.
4. The crew obtains a clearance and performs the necessary switching and grounding of the section of line. Crew also isolates secondary conductors by pulling meters and opening possible sources.
5. The crews clear debris as needed to perform the restoration activities and detach and secure joint use attachments from any broken poles.
6. Failed poles and cross-arms are replaced as discussed in earlier scenarios.
7. The crews lay out the downed wire beside the pole routes and assess the condition of the wires. If there is damage to the wire, repairs are made while still on the ground.
8. When the structure repairs are complete and the wire has been assessed and repaired, the crews raise the wires near position and place at rest on the cross-arms.
9. Near the middle of the line section, hoists are used to pull the wires from both directions until the proper sag and tension is achieved.
10. The clearances are checked along the line section, and the wire is then spliced at the pulling location.
11. Linemen working at each structure place the wires on the insulators and tie the conductors to the insulators.
12. The crews then make up all ground connections, taps, transformer primary connections, and other equipment connections.
13. Grounding equipment is removed, the clearance is released and the section is energized.
14. The crew closes the worksite, returns traffic to normal controls, and moves to its next assignment.

Logistics Sites

Hurricane Laura			
Site Name	Region	City	Site Type
AG Sugar Mill	West	Lacassine	Turn-Key
Burton Coliseum	West	Lake Charles	Turn-Key
DRG-Dumpsters	Various	All sites	Environmental
Gossen Park	West	Rayne	Turn-Key
DRG-Laydown Yards	West	Lake Charles, Sulphur, Westlake, Iowa	Laydown Yards
DRG-Parking	West	Lake Charles, Rayne, Sulphur	Parking
West Cal	West	Sulphur	Turn-Key
HOS Achiever	West	Lake Charles	Vessel Charter
HOS Riverbend	West	Lake Charles	Vessel Charter
L'Auberge Casino	West	Lake Charles	Turn-Key
Vinton - Love's	West	Vinton	Turn-Key
Ward 3	West	Lake Charles	Turn-Key
Frasch Softball Complex	West	Sulphur	Turn-Key
Prien Lake Mall	West	Lake Charles	Turn-Key
Burton Coliseum	West	Lake Charles	Command Center
Carlyss Park and Ride	West	Sulphur	Turn-Key
Jack Brooks Regional Airport	West	Beaumont, TX	Turn-Key
Steamboat Bill's	West	Lake Charles	Turn-Key

Hurricane Delta			
Site Name	Region	City	Site Type
Lacassine Sugar Mill	West	Lacassine	Catering
Abbeville	West	Abbeville	Turn-key
Burton Coliseum	West	Lake Charles	Turn-key
DRG-Dumpsters	Various	All Sites	Environmental
Gossen Park	West	Rayne	Turn-key
Hammond Dumpsters	South	Hammond	Environmental
Laydown Yards	West, East	Abbeville, Baton Rouge, Denham Springs, New Iberia, Sulphur	Laydown yard
West Cal	West	Sulphur	Turn-key

<b>Hurricane Zeta</b>			
<b>Site Name</b>	<b>Region</b>	<b>City</b>	<b>Site Type</b>
Island Performer	Southeast	Port Fourchon	Vessel Charter
Amite	South	Amite	Catering
Baby Cakes Stadium	South	Metairie	Catering
Baton Rouge	East	Baton Rouge	Catering
Hammond	South	Hammond	Catering
Laydown Site - Braithwaite	Southeast	Braithwaite	Catering
Laydown Site - Morans Mariana	Southeast	Port Fourchon	Catering
Laydown Site - Violet	Southeast	Violet	Catering
Lockport Golden Meadows	Southeast	Golden Meadow	Catering
Lockport Service Center	Southeast	Lockport	Catering
Lockport South Larfourche High	Southeast	Cut Off	Catering
NOLA Motor Speedway	Southeast	Avondale	Catering
Ponchatrain Center	South	Kenner	Catering
Port of St Bernard	Southeast	Chalmette	Catering
Reserve	Southeast	Reserve	Catering
Riverlake Service Center	Metro	New Orleans	Catering
St Rosalie	Southeast	Belle Chasse	Catering
Terrebone	Southeast	Houma	Catering
Zachary	East	Zachary	Catering
HOS Achiever	Southeast	Port Fourchon	Vessel Charter



# COVID-19 Safety Protocols

## Do's and Don'ts for Contractors and Sub-contractors



### Do:

1. Self-check BEFORE each time you come to an Entergy worksite. DO NOT report to work if you answer "yes" to any of the following questions:
  - In the past 10 days, have you or anyone in your household shown symptoms or tested positive for COVID-19?
  - In the past 2 weeks, have you had close contact with anyone who has shown symptoms or tested positive for COVID-19?
  - In the past 2 weeks, have you or a household member, returned from international travel or a cruise?
2. Socially distance from others while at work AND outside of work, including travelling to and from work and during break and mealtimes. COVID-19 is highly contagious and maintaining a distance of 6 feet at all times from others is a key measure to prevent you from infecting others or becoming infected. It is important to understand that you can have COVID-19, be infectious and NOT exhibit symptoms.
3. Clean and disinfect frequently touched surfaces and common areas daily – on and off work!
4. Wash your hands often with soap and water for 20 seconds.
5. Do not touch your hands, eyes, nose or face.
6. Wear a face covering at all times that completely covers your mouth and nose whenever you are not able to maintain social distance from others. A face covering is required on Entergy property or while working on behalf of Entergy. However, face coverings can be removed when working outdoors while maintaining at least 6 feet from others, when working in a room where others are not present, or when working from home.
7. Report it to your supervisor immediately if you start to exhibit symptoms or believe you have come into close contact with a person with symptomatic COVID-19.
8. Third-party management over contractors MUST report the following to their Entergy point of contact if either a contractor or sub-contractor under their direction:
  - Exhibits symptoms compatible with COVID-19.
  - Tests positive for COVID-19.
  - Has a household member who has tested positive for COVID-19 or exhibited symptoms compatible with COVID-19 or had an interaction that meets the definition of close contact.

### Do Not:

1. Do not carpool with others if at all possible. If carpooling is necessary, face coverings should be worn at all times while in the vehicle.
2. Do not share lodging with others if at all possible. If you must lodge with another person, ensure you maintain a distance of 6 feet from one another at all times, clean and disinfect all common surfaces before and after you touch them.
3. Do not share tools. If tools or equipment must be shared, clean and disinfect before AND after use.

### Definitions:

1. Person with Symptomatic COVID-19: A person who exhibits symptoms compatible with COVID-19 or a person who tested positive for COVID-19 and developed symptoms.
2. Close Contact: Being within 6 feet, for more than 15 minutes, of a person with symptomatic COVID-19 during the period from 48 hours before symptom onset until the person meets the criteria for discontinuing home isolation – OR – a person who has tested positive for COVID-19, but is asymptomatic, during the period of 48 hours before the date of specimen collection until the person meets the criteria for discontinuing home isolation.

# COVID-19 Safety Protocols

## Dos and Don'ts for Contractors and Sub-contractors



### Best Practices for COVID-19 While at Home or In Public

Since the virus knows no bounds and is transmitted by person-to-person contact, the preventive measures we take when we are not at work are just as important to your safety and health and that of your co-workers. In a pandemic, the risk of catching a respiratory illness is greater in areas where people may not be taking the same precautions we are taking at work. The following are best practices you should implement for you and your family.

#### SOCIAL DISTANCING OUTSIDE THE WORKPLACE

- Avoid public transportation when possible. Instead walk, cycle or drive a car.
- Limit outings to necessities like food, medicine and other essential services. When you do go out, be sure to practice social distancing, maintaining 6 feet between you and others.
- Order food for delivery when available and ask them to leave your food at the door to limit contact.
- Stay active but workout at home, or consider walking or running outside while still maintaining proper distance from others.
- Don't invite others over for gatherings or parties, even family. This is for your safety and theirs.

#### STOP THE SPREAD

- Avoid close contact with people who may be sick and others outside your immediate household.
- Avoid touching your eyes, nose and mouth.
- Stay home when you are sick.
- Wash your hands often with soap and water for 20 seconds.
- Cover your cough or sneeze with a tissue, then throw the tissue in the trash.
- Clean and disinfect frequently touched objects and surfaces using a regular household cleaning spray or wipe.
- Wear a cloth face covering in public when social distancing is hard to do.
- If riding in a vehicle with someone you are not living with, a face covering should be worn. Note that carpooling should be avoided whenever possible due to the need to socially distance.

The best known preventive measures for COVID-19 remain...



washing hands



good hygiene practices



face coverings



social distancing

**Distribution Mutual-Aid Utilities**

<b>Hurricane Laura</b>		
<b>Company Name</b>	<b>Estimated Cost</b>	<b>Mutual Assistance Relationship</b>
Alabama Power Company	11,959,750	Southeastern Electric Exchange
Florida Power & Light Company	10,751,450	Southeastern Electric Exchange
FE Cleveland Electric Illuminating Co	4,719,225	Southeastern Electric Exchange
Commonwealth Edison Company	4,595,309	Southeastern Electric Exchange
Mississippi Power Company	3,771,728	Southeastern Electric Exchange
Xcel Energy Inc.	3,696,550	Midwest Mutual Assistance Group
Georgia Power Company	3,424,960	Southeastern Electric Exchange
Gulf Power Company	2,962,810	Southeastern Electric Exchange
FE West Penn Power Company	2,749,240	Southeastern Electric Exchange
CenterPoint Energy, Inc.	2,629,868	Southeastern Electric Exchange
PHI - Delmarva Power	2,274,800	Southeastern Electric Exchange
Tampa Electric Company	2,260,388	Southeastern Electric Exchange
PECO Energy	1,950,233	Southeastern Electric Exchange
FE Metropolitan Edison Company	1,653,225	Southeastern Electric Exchange
Louisville Gas and Electric Company	1,536,586	Southeastern Electric Exchange
FE The Potomac Edison Company	1,512,190	Southeastern Electric Exchange
FE Monongahela Power Company	1,368,360	Southeastern Electric Exchange
OG&E Electric Services	1,320,740	Southeastern Electric Exchange
Duke Energy FL	1,131,460	Southeastern Electric Exchange
FE Jersey Central Power and Light Co.	890,675	Southeastern Electric Exchange
Texas-New Mexico Power Company	614,973	Southeastern Electric Exchange
Dominion	91,592	Southeastern Electric Exchange
	<b>\$ 67,866,112</b>	

**Hurricane Delta**

<b>Company Name</b>	<b>Estimated Cost</b>	<b>Mutual Assistance Relationship</b>
Duke Energy - Carolina	13,975,275	Southeastern Electric Exchange
Florida Power & Light Company	4,100,525	Southeastern Electric Exchange
Georgia Power Company	3,394,380	Southeastern Electric Exchange
Mississippi Power Company	1,512,285	Southeastern Electric Exchange
AEP Indiana Michigan Power	1,238,040	Southeastern Electric Exchange
Duke Energy - Florida	1,006,400	Southeastern Electric Exchange
Gulf Power Company	713,310	Southeastern Electric Exchange
Florida Power & Light Company	175,350	Southeastern Electric Exchange
FE The Toledo Edison Company	173,625	Southeastern Electric Exchange
FE Ohio Edison Company	153,625	Southeastern Electric Exchange
Tampa Electric Company	62,055	Southeastern Electric Exchange
Florida Power & Light Company	56,340	Southeastern Electric Exchange
	<b>\$ 26,561,210</b>	

<b>Hurricane Zeta</b>		
<b>Company Name</b>	<b>Estimated Cost</b>	<b>Mutual Assistance Relationship</b>
AEP Swepco	\$ 2,110,160	Southeastern Electric Exchange
AEP Appalachian Power	\$ 1,572,940	Southeastern Electric Exchange
Tampa Electric Company	\$ 1,265,670	Southeastern Electric Exchange
Avangrid - UI	\$ 795,840	North Atlantic Mutual Assistance Group
AEP Kentucky Power	\$ 548,700	Southeastern Electric Exchange
SLEMCO	\$ 309,504	Edison Electric Institute
Florida Power & Light Company	\$ 149,220	Southeastern Electric Exchange
Tampa Electric Company	\$ 99,480	Southeastern Electric Exchange
	\$ 6,851,514	

**Distribution Line Contractors <sup>1</sup>**

<b>Hurricane Laura</b>		
<b>Vendor Name</b>	<b>Cost</b>	<b>Contract Type</b>
EDISON POWER CONSTRUCTORS INC	35,043,740	Off System
BIRD ELECTRIC ENTERPRISES LLC	34,954,676	Off System
PIKE ELECTRIC LLC	32,573,017	Baseload, Off System
MID-CON ENERGY SERVICES INC	27,962,793	Off System
JORDAN HIGH VOLTAGE INC	27,612,682	Off System
CENTER PHASE ENERGY LLC	22,115,632	Off System
DAVIS H ELLIOT CONSTRUCTION CO INC	19,596,475	Off System
IRBY CONSTRUCTION COMPANY	16,714,767	Baseload, Off System
HAUGLAND ENERGY GROUP LLC	13,849,948	Off System
MDR CONSTRUCTION INC	11,611,352	Baseload, Off System
SERVICE ELECTRIC COMPANY	9,124,753	Off System
LEE ELECTRICAL CONSTRUCTION	9,655,735	Off System
SOUTHERN ELECTRIC CORP	8,440,042	Baseload, Off System
LINETEC SERVICES LLC	8,290,100	Baseload, Off System
UTILITY LINES CONSTRUCTION SERVICE INC	7,727,616	Baseload
DANELLA POWERS SERVICES INC	7,721,721	Off System
BBC ELECTRICAL SERVICES INC	7,535,870	Baseload, Off System
HEART UTILITIES OF JACKSONVILLE INC	7,294,984	Off System
PRIMORIS T&D SERVICES LLC	6,375,826	Baseload, Off System
CHAIN ELECTRIC COMPANY	6,312,546	Baseload, Off System
VOLT POWER LLC	6,070,720	Off System
HOOPER CORP	6,042,994	Baseload
POWER LINE SERVICES INC	5,962,972	Off System
VALIANT ENERGY SERVICE LLC	5,831,301	Off System
ROWC LLC DBA DIAMOND D INDUSTRIES	5,600,113	Baseload
POWERGRID SERVICES LLC	5,294,998	Baseload, Off System
BADGER DAYLIGHTING CORP	5,159,125	Off System
MASTEC NORTH AMERICA INC	4,812,682	Off System
HENKELS & MCCOY INC	4,793,595	Off System
PAR ELECTRICAL CONTRACTORS INC	4,779,876	Off System
PMI ENERGY SOLUTIONS LLC	4,728,336	Off System
QUALITY LINES INC	4,628,269	Off System
JW DIDADO ELECTRIC LLC	4,476,551	Off System
5 STAR ELECTRIC LLC	3,999,090	Off System
CONCURRENT GROUP LLC	3,811,803	Off System
HIGHER POWER ELECTRICAL LLC	3,466,587	Off System
GREAT SOUTHWESTERN CONSTRUCTION INC	2,933,593	Off System
INTREN LLC	2,933,044	Off System
POWER TOWN LINE CONSTRUCTION LLC	2,865,590	Off System

<sup>1</sup> Amounts shown in exhibit do not reflect adjustments or estimates.

<b>Hurricane Laura</b>		
<b>Vendor Name</b>	<b>Cost</b>	<b>Contract Type</b>
ARC AMERICAN INC	2,807,856	Off System
NORTH HOUSTON POLE LINE LP	2,745,847	Baseload
WESCO DISTRIBUTION INC	2,572,226	Off System
XTREME POWERLINE CONSTRUCTION INC	2,315,272	Off System
MICHELS POWER	2,160,847	Off System
B&B ELECTRICAL & UTILITY CONTRACTORS	2,100,701	Off System
HYDAKER WHEATLAKE COMPANY	2,000,417	Baseload, Off System
GREGORY ELECTRIC CO INC	1,907,567	Off System
WAMPOLE MILLER INC DBA MILLER BROS	1,891,079	Off System
QUALITY POWERLINE LLC	1,882,265	Off System
R C DIRECTIONAL BORING LLC	1,841,788	Baseload
Boh Bros	1,170,400	Baseload
THE FISHEL COMPANY DBA TEAM POWER	1,790,211	Off System
JMS CONTRACTORS, LLC	1,772,403	Off System
NORTHSTAR ENERGY SOLUTIONS LLC	1,699,598	Off System
MUSGROVE CONSTRUCTION INC	1,699,171	Off System
MP TECHNOLOGIES LLC	1,690,581	Off System
I B ABEL INC	1,682,616	Off System
BHI ENERGY POWER SERVICES LLC	1,668,504	Off System
SCROTEC INC	1,499,043	Off System
MP SYSTEMS INC DBA PIEPER LINE	1,322,253	Off System
MIRARCHI BROTHERS INC	1,303,707	Off System
PATRIOT CONSTRUCTION AND INDUSTRIAL LLC	1,298,723	Off System
MJ ELECTRIC LLC-A QUANTA SERVICES CO	1,216,722	Off System
HARLAN ELECTRIC CO	1,207,787	Off System
HOWARD DEDICATED OPERATIONS INC	1,132,821	Off System
PLUS FINANCE INC DBA BOWLIN ENERGY LLC	1,016,811	Off System
LECOM INC	999,154	Off System
THOMPSON ELECTRIC INC	975,615	Off System
PLASKA TRANSMISSION LINE CONSTRUCTION	973,148	Off System
D&M ELECTRICAL CONTRACTING INC	972,721	Off System
MAIN LITE ELECTRIC COMPANY INC	952,054	Off System
TRAFFIC CONTROL PRODUCTS CO OF	897,730	Off System
EDG INC	759,445	Off System
THE ROBERT HENRY CORPORATION	727,940	Off System
LE MYERS CO	637,030	Off System
T&C SPECIALTY DISTRIBUTORS INC	581,000	Off System
MEDCOR INC	463,559	Off System
ATKINS ELECTRIC CO INC	445,513	Off System
CUSTOM LIGHTING SERVICES LLC DBA	430,936	Off System
STURGEON ELECTRIC CO INC	407,480	Off System
ERTEL CONSTRUCTION INC	361,211	Off System
IMPERIUM UTILITY SERVICES LLC	316,907	Off System
M&S Electric	314,000	Baseload
FAUCHEUX SERVICES INC	287,000	Off System
ONESOURCE RESTORATION LLC	264,571	Off System
EVERS ELECTRIC COMPANY INC	251,363	Off System
SEMPER UTILITIES LLC	235,762	Off System
AWP INC	217,253	Off System
SOUTHERN OUTDOOR MAINTENANCE PLUS INC	160,426	Off System
PERRY & SONS LLC	149,541	Off System
WENDELL WHITE INC	141,437	Off System
JBT ELECTRIC	122,004	Off System
PCS 2000 LLC	114,896	Baseload
TECHSERV CONSULTING & TRAINING LTD	99,069	Off System
BUSTER SHARP AND SONS LOGGING INC	64,855	Off System

<sup>1</sup> Amounts shown in exhibit do not reflect adjustments or estimates.

<b>Hurricane Laura</b>		
<b>Vendor Name</b>	<b>Cost</b>	<b>Contract Type</b>
BODIES CONSTRUCTION INC	63,164	Off System
BRIGHT STAR SOLUTIONS INC	57,244	Baseload
H BROWN INC	56,002	Off System
THE TRI-M GROUP LLC	45,208	Off System
PFES DBA PLANET FORWARD ENERGY	41,483	Off System
OLAMETER CORPORATION	40,827	Off System
ALPINE POWER SYSTEMS	32,168	Off System
GUIDANT GROUP INC	21,826	Off System
RONNIES AIRBOATS UNLIMITED LLC	20,111	Off System
POWER ENGINEERS INC	19,500	Off System
EAVES CONTRACTING	18,750	Off System
JAMES E RACHAL DBA JR & SON ENTERPRISES	15,999	Baseload
LOFTIN ELECTRIC COMPANY LLC	10,993	Off System
RIVERS FENCE CO	8,587	Off System
SOUTH SIDE SERVICES INC	7,459	Off System
CITIBANK USA NA	6,925	Off System
DUPLANTIER ICE SERVICE LLC	6,818	Off System
WOODSON INC	6,238	Baseload
GILL INDUSTRIES LTD	4,653	Off System
STUART C IRBY CO	2,617	Baseload
WINN PARISH SHERIFF	1,680	Off System
KING CONSTRUCTION SERVICES LLC	714	Off System
<b>Total</b>	<b>\$469,915,315</b>	

<sup>1</sup>Amounts shown in exhibit do not reflect adjustments or estimates.



<b>Hurricane Delta</b>		
<b>Vendor Name</b>	<b>Cost</b>	<b>Contract Type</b>
EDISON POWER CONSTRUCTORS INC	22,084,587	Off System
CENTER PHASE ENERGY LLC	10,098,448	Off System
BIRD ELECTRIC ENTERPRISES LLC	7,714,264	Off System
PIKE ELECTRIC LLC	6,686,383	Off System
HAUGLAND ENERGY GROUP LLC	5,691,898	Off System
DAVIS H ELLIOT CONSTRUCTION CO INC	3,538,536	Off System
HEART UTILITIES OF JACKSONVILLE INC	3,299,158	Off System
LEE ELECTRICAL CONSTRUCTION	3,233,038	Off System
VOLT POWER LLC	2,861,280	Off System
SERVICE ELECTRIC COMPANY	2,749,717	Off System
LINETEC SERVICES LLC	1,768,945	Baseload, Off System
CHAIN ELECTRIC COMPANY	1,569,042	Baseload, Off System
MID-CON ENERGY SERVICES INC	1,519,171	Off System
BBC ELECTRICAL SERVICES INC	1,385,772	Off System
ARC AMERICAN INC	1,370,415	Off System
PRIMORIS T&D SERVICES LLC	1,352,981	Baseload
IRBY CONSTRUCTION COMPANY	1,285,971	Baseload, Off System
CONCURRENT GROUP LLC	1,187,539	Off System
SOUTHERN ELECTRIC CORP	1,102,956	Baseload, Off System
AMPP CONSTRUCTION INC	976,430	Off System
POWER TOWN LINE CONSTRUCTION LLC	818,899	Off System
THAYER POWER AND COMMUNICATION	797,367	Off System
THE FISHEL COMPANY DBA TEAM POWER	757,950	Off System
PAR ELECTRICAL CONTRACTORS INC	559,530	Off System
POWERGRID SERVICES LLC	483,936	Off System
MASTEC NORTH AMERICA INC	449,949	Baseload, Off System
B&B ELECTRICAL & UTILITY CONTRACTORS	398,785	Off System
SUNBELT RENTALS INDUSTRIAL SERVICES LLC	360,407	Off System
THE ROBERT HENRY CORPORATION	344,881	Off System
PATRIOT CONSTRUCTION AND INDUSTRIAL LLC	339,991	Off System
JMS CONTRACTORS, LLC	335,746	Off System
UTILITY LINES CONSTRUCTION SERVICE INC	310,773	Off System
ERTEL CONSTRUCTION INC	268,818	Off System
BADGER DAYLIGHTING CORP	258,170	Off System
HOWARD DEDICATED OPERATIONS INC	254,078	Off System
NORTHSTAR ENERGY SOLUTIONS LLC	237,883	Off System
XTREME POWERLINE CONSTRUCTION INC	224,831	Off System
VALIANT ENERGY SERVICE LLC	220,927	Off System
EDG INC	200,006	Off System

<sup>1</sup> Amounts shown in exhibit do not reflect adjustments or estimates.

<b>Hurricane Delta</b>		
<b>Vendor Name</b>	<b>Cost</b>	<b>Contract Type</b>
PERRY & SONS LLC	179,116	Off System
EVERS ELECTRIC COMPANY INC	150,362	Off System
LANDRY'S LAWN SERVICE & LANDSCAPING	119,600	Off System
JBT ELECTRIC	106,402	Off System
PFES DBA PLANET FORWARD ENERGY	105,003	Off System
FAUCHEUX SERVICES INC	92,250	Off System
MDR CONSTRUCTION INC	87,242	Baseload, Off System
HENKELS & MCCOY INC	77,042	Off System
ONESOURCE RESTORATION LLC	52,542	Off System
MEDCOR INC	42,274	Off System
POWER ENGINEERS INC	41,915	Off System
KING CONSTRUCTION SERVICES LLC	21,564	Off System
WENDELL WHITE INC	15,801	Off System
EAVES CONTRACTING	13,850	Off System
T&C SPECIALTY DISTRIBUTORS INC	10,892	Off System
AGGREKO LLC	10,348	Off System
WESCO DISTRIBUTION INC	7,762	Off System
H BROWN INC	6,809	Off System
SOLPOWERLINES LLC	6,474	Off System
BUSTER SHARP AND SONS LOGGING INC	4,640	Off System
R C DIRECTIONAL BORING LLC	3,110	Off System
DUPLANTIER ICE SERVICE LLC	3,019	Off System
CITIBANK USA NA	2,711	Off System
	90,260,181	

<sup>1</sup> Amounts shown in exhibit do not reflect adjustments or estimates.

<b>Hurricane Zeta</b>		
<b>Vendor Name</b>	<b>Cost</b>	<b>Contract Type</b>
EDISON POWER CONSTRUCTORS INC	10,199,544	Off System
BIRD ELECTRIC ENTERPRISES LLC	5,537,842	Off System
CHAIN ELECTRIC COMPANY	5,310,352	Baseload, Off System
HEART UTILITIES OF JACKSONVILLE INC	3,907,993	Off System
LINETEC SERVICES LLC	3,686,823	Baseload, Off System
PIKE ELECTRIC LLC	3,412,056	Baseload, Off System
VOLT POWER LLC	2,985,600	Off System
SERVICE ELECTRIC COMPANY	2,924,839	Off System
SOUTHERN ELECTRIC CORP	2,770,109	Baseload, Off System
NORTH HOUSTON POLE LINE LP	2,590,240	Baseload
LEE ELECTRICAL CONSTRUCTION	2,272,463	Off System
GRAYS POWER SUPPLY LLC	2,013,683	Off System
DAVIS H ELLIOT CONSTRUCTION CO INC	1,723,866	Off System
PRIMORIS T&D SERVICES LLC	1,525,689	Baseload
SPARKS ENERGY INC	1,516,347	Off System
PAR ELECTRICAL CONTRACTORS INC	971,843	Off System
CIVAECO	965,532	Off System
UTILITY LINES CONSTRUCTION SERVICE INC	907,810	Baseload
BRIGHT STAR SOLUTIONS INC	897,910	Off System
HYDAKER WHEATLAKE COMPANY	888,732	Off System
D&M ELECTRICAL CONTRACTING INC	887,253	Off System
NORTHSTAR ENERGY SOLUTIONS LLC	883,752	Off System
B&B ELECTRICAL & UTILITY CONTRACTORS	866,536	Baseload
NORTHLINE UTILITIES LLC	825,476	Off System
POWERGRID SERVICES LLC	745,596	Baseload
BOBCAT ELETRICAL & INSTRUMENTATION LLC	744,773	Off System
BADGER DAYLIGHTING CORP	652,414	Off System
BBC ELECTRICAL SERVICES INC	585,508	Off System
RONNIES AIRBOATS UNLIMITED LLC	576,312	Off System
IRBY CONSTRUCTION COMPANY	511,310	Baseload, Off System
SUNBELT RENTALS INDUSTRIAL SERVICES LLC	484,219	Off System
FAUCHEUX SERVICES INC	474,078	Off System
MDR CONSTRUCTION INC	446,837	Baseload, Off System
HOWARD DEDICATED OPERATIONS INC	420,959	Off System
BHI ENERGY POWER SERVICES LLC	352,273	Off System
MUSGROVE CONSTRUCTION INC	335,005	Off System
R C DIRECTIONAL BORING LLC	334,414	Off System
D M BASS INC	318,708	Off System
THAYER POWER AND COMMUNICATION	261,701	Off System

<sup>1</sup> Amounts shown in exhibit do not reflect adjustments or estimates.

Hurricane Zeta		
Vendor Name	Cost	Contract Type
MASTEC NORTH AMERICA INC	243,226	Off System
EVERS ELECTRIC COMPANY INC	232,949	Off System
AWP INC	218,101	Off System
KING CONSTRUCTION SERVICES LLC	186,105	Off System
JMS CONTRACTORS, LLC	177,762	Off System
GREAT SOUTHWESTERN CONSTRUCTION INC	164,535	Off System
T&C SPECIALTY DISTRIBUTORS INC	115,175	Off System
WESCO DISTRIBUTION INC	88,500	Off System
REMOTE INSPECTION TECHNOLOGIES LLC	70,784	Off System
UNITED RENTALS NORTH AMERICA INC	34,242	Off System
ONESOURCE RESTORATION LLC	32,506	Off System
PFES DBA PLANET FORWARD ENERGY	28,109	Off System
PATRIOT CONSTRUCTION AND INDUSTRIAL LLC	21,077	Off System
M & S ELECTRIC CONTRACTORS INC DBA	19,342	Off System
WOODSON INC	17,600	Off System
AGGREKO LLC	14,312	Off System
CITIBANK USA NA	9,295	Off System
THE THREE CS PROPERTIES INC	1,974	Off System
T BAKER SMITH LLC	1,958	Off System
	<u>69,393,950</u>	

<sup>1</sup> Amounts shown in exhibit do not reflect adjustments or estimates.

Distribution Vegetation Contractors<sup>1</sup>

Hurricane Laura		
Vendor Name	Cost	Contract Type
ASPLUNDH TREE EXPERT CO	17,631,438	Off System
ABC PROFESSIONAL TREE SERVICES INC	15,980,870	Baseload
XYLEM INC DBA XYLEM TREE EXPERTS	9,756,085	Baseload
LEWIS TREE SERVICE INC	9,579,799	Off System
ROWC LLC DBA DIAMOND D INDUSTRIES	8,449,737	Baseload
WA KENDALL & CO INC	6,401,359	Baseload
WRIGHT TREE SERVICE INC.	5,476,323	Off System
DAVEY TREE EXPERT CO	3,983,050	Off System
PENN LINE SERVICE INC	3,858,899	Off System
TREES LLC	3,082,678	Off System
ZIELIES TREE SERVICE INC	2,759,627	Off System
WEST TREE SERVICE INC	1,803,179	Off System
BURFORDS CONSTRUCTION LLC	1,534,168	Off System
NELSON TREE SERVICE INC	1,311,718	Off System
BURFORDS TREE LLC	1,303,101	Off System
THE ARBOR EXPERTS LLC	1,272,756	Off System
GUNNISON TREE SERVICES LLC	1,082,073	Off System
CHEM SPRAY SOUTH INC	1,078,330	Off System
SOUTHERN LINE CONTRACTORS INC	985,457	Off System
SOLSCAPES LLC	804,906	Baseload
WEED CONTROL SERVICES LLC	561,416	Off System
ARBOR RESOURCES LLC	545,194	Off System
HALTER VEGETATION MANAGEMENT INC	468,410	Off System
RDA SERVICE COMPANY INC	402,769	Off System
JAFLO INC	329,065	Off System
POWERGRID SERVICES LLC	279,075	Baseload, Off System
DAVEY RESOURCE GROUP INC	230,017	Off System
SOUTHERN OUTDOOR MAINTENANCE PLUS INC	188,489	Off System
LAKESIDE ENVIRONMENTAL CONSULTANTS LLC	134,416	Off System
LANDRY'S LAWN SERVICE & LANDSCAPING	134,250	Off System
ROCKS LAWN CARE STUMP OUT LLC	124,182	Baseload
ACRT INC	5,367	Baseload
	101,538,206	

<sup>1</sup> Amounts shown in exhibit do not reflect adjustments or estimates.

Hurricane Delta		
Vendor Name	Cost	Contract Type
ABC PROFESSIONAL TREE SERVICES INC	4,607,811	Baseload
ROWC LLC DBA DIAMOND D INDUSTRIES	1,434,281	Baseload
LEWIS TREE SERVICE INC	1,299,195	Off System
WA KENDALL & CO INC	1,272,586	Baseload
DAVEY TREE EXPERT CO	1,272,360	Off System
XYLEM INC DBA XYLEM TREE EXPERTS	1,137,595	Baseload
NELSON TREE SERVICE INC	524,256	Off System
ARBOR RESOURCES LLC	514,080	Off System
WRIGHT TREE SERVICE INC	405,858	Off System
HALTER VEGETATION MANAGEMENT INC	295,153	Off System
SOUTHERN LINE CONTRACTORS INC	270,652	Off System
TREES LLC	267,588	Off System
PENN LINE SERVICE INC	248,005	Off System
SOLSCAPES LLC	235,410	Baseload
WEST TREE SERVICE INC	179,002	Off System
BURFORDS CONSTRUCTION LLC	168,642	Off System
ROCKS LAWN CARE STUMP OUT LLC	160,707	Baseload
CHEM SPRAY SOUTH INC	148,456	Baseload
LAKESIDE ENVIRONMENTAL CONSULTANTS LLC	61,457	Baseload
ACRT INC	39,866	Baseload
DONALD P BLANCHARD JR DBA BAYOU AIR	900	Off System
	14,543,861	

<sup>1</sup> Amounts shown in exhibit do not reflect adjustments or estimates.

<b>Hurricane Zeta</b>		
<b>Vendor Name</b>	<b>Cost</b>	<b>Contract Type</b>
ABC PROFESSIONAL TREE SERVICES INC	6,696,208	Baseload
ROWC LLC DBA DIAMOND D INDUSTRIES	1,533,864	Baseload
XYLEM INC DBA XYLEM TREE EXPERTS	1,335,576	Baseload
WA KENDALL & CO INC	1,220,762	Baseload
ARBOR RESOURCES LLC	792,223	Off System
ISIAH THOMAS DBA GRE3N WASTE REMOVAL LLC	762,614	Off System
WEST TREE SERVICE INC	530,131	Off System
LEWIS TREE SERVICE INC	430,583	Off System
ROCKS LAWN CARE STUMP OUT LLC	362,426	Baseload
TREES LLC	203,982	Off System
NELSON TREE SERVICE INC	191,066	Off System
DAVEY TREE EXPERT CO	178,289	Off System
ASPLUNDH TREE EXPERT CO	72,849	Off System
SOLSCAPES LLC	62,818	Baseload
LAKESIDE ENVIRONMENTAL CONSULTANTS LLC	36,925	Baseload
ACRT INC	22,312	Baseload
LANDRY'S LAWN SERVICE & LANDSCAPING	6,500	Off System
	14,439,126	

<sup>1</sup> Amounts shown in exhibit do not reflect adjustments or estimates.

Distribution Logistics Contractors <sup>1</sup>

Hurricane Laura		
Vendor Name	Cost	Services Provided
LODGING SOLUTIONS LLC	76,973,438	Turn-key
DISASTER RESOURCE GROUP LLC	53,733,139	Turn-key
STORM SERVICES LLC	45,267,103	Turn-key
QUALTEK RECOVERY LOGISTICS LLC	25,381,624	Turn-key
BASE LOGISTICS LLC	6,683,511	Turn-key
LOG CABIN MESQUITE GRILL LLC	3,335,069	Catering
HORNBECK OFFSHORE SERVICES INC DBA	2,591,220	Vessel charter
SLOBBERKNOCKERS FISH CO LLC	2,135,038	Catering
HOTARD COACHES INC	1,724,094	Transportation
BAR H CONSTRUCTION LLC	1,027,859	Site clean up
CATERING CAJUN LLC	630,663	Catering
WENDELL WHITE INC	73,349	Site clean up
CAL CAM PARKING LLC	51,870	Staging site rental
COTTON COMMERCIAL USA INC	48,576	Catering
BUS SUPPLY CHARTERS INC	46,000	Transportation
JAMES H CURETON	43,680	Site clean up
COTTON LOGISTICS INC	36,036	Catering
REVENUEW INTERNATIONAL LLC	35,938	Invoice auditing
GUIDANT GROUP INC	26,332	Logistics support
ELITE SERVICE RECOVERY & TOWING LLC	23,118	Staging site rental
UNITED SITE SERVICES NORTHEAST INC	13,801	Staging site rental
REPUBLIC SERVICES NATIONAL ACCOUNTS LLC	5,236	Waste hauling
HOLIDAY INN	3,268	Lodging
CITIBANK USA NA	1,610	Lodging
	<u>219,891,572</u>	

<sup>1</sup> Amounts shown in exhibit do not reflect adjustments or estimates.



Hurricane Delta		
Vendor Name	Cost	Services Provided
DISASTER RESOURCE GROUP LLC	6,261,220	Turn-key
SLOBBERKNOCKERS FISH CO LLC	737,306	Catering
HOTARD COACHES INC	494,168	Transportation
COTTON COMMERCIAL USA INC	240,180	Catering
LOG CABIN MESQUITE GRILL LLC	162,594	Catering
BUS SUPPLY CHARTERS INC	104,000	Transportation
CATERING CAJUN LLC	68,467	Catering
QUALTEK RECOVERY LOGISTICS LLC	26,583	Turn-key
MCINTYRE INVESTMENTS LLC	24,570	Staging site rental
GUIDANT GROUP INC	10,316	Staging site support
LEWIS COACHES INC	4,050	Transportation
CITIBANK USA NA	72	Lodging
	<u>8,133,525</u>	

<sup>1</sup> Amounts shown in exhibit do not reflect adjustments or estimates.

Hurricane Zeta		
Vendor Name	Cost	Services Provided
CATERING CAJUN LLC	966,299	Catering
HOTARD COACHES INC	557,900	Transportation
CHRIS MORANS MARINA LLC	530,892	Catering
LANEY C RACING LLC	507,328	Staging site rental
KENDALL W DAY DBA DAYS SMOKEHOUSE AND	440,087	Catering
HORNBECK OFFSHORE SERVICES INC DBA	405,763	Vessel Charter
BUS SUPPLY CHARTERS INC	107,100	Transportation
LEWIS COACHES INC	61,500	Transportation
MESSINA INC	51,828	Catering
LABELLAS CATERING INC	13,679	Catering
GUIDANT GROUP INC	2,813	Logistics support
CITIBANK USA NA	880	Lodging
	<u>3,646,067</u>	

<sup>1</sup> Amounts shown in exhibit do not reflect adjustments or estimates.

Distribution Other Contractors<sup>1</sup>

Hurricane Laura		
Vendor Name	Cost	Service Provided
SOUTH SIDE SERVICES INC	18,560,063	Environmental services
MACRO COMPANIES INC	11,081,087	Vehicle fuel
Reddmudd Services	6,218,452	Environmental services
WOODSON INC	5,148,319	Investment recovery
SOUTHERN ELECTRIC CORP	5,086,568	Investment recovery
VRP GROUP INC DBA REGIUS DBA VERTUS	4,435,540	Security
OSMOSE UTILITIES SERVICES INC	3,827,602	Damage assessment
ABC PROFESSIONAL TREE SERVICES INC	3,730,331	Investment recovery
UNITED STATES ENVIRONMENTAL SERVICES LLC	3,233,014	Environmental services
ROWC LLC DBA DIAMOND D INDUSTRIES	2,657,665	Investment recovery
FOSTER CABLE SERVICES INC	2,138,398	IT/Telecom
LOFTON SECURITY SERVICES INC	1,717,908	Security
CH ROBINSON COMPANY INC	1,656,281	Freight management
ARKEL CONSTRUCTORS LLC	1,463,881	Facilities
TECHSERV CONSULTING & TRAINING LTD	1,252,770	Damage assessment
PROFORCE LLC	1,006,417	Investment recovery
D M BASS INC	1,002,948	Investment recovery
STORM SERVICES LLC	828,840	Damage assessment
Calcasieu Parish Public Works	775,000	Staging site repair
CHAIN ELECTRIC COMPANY	662,999	IT/Telecom
WASTE MANAGEMENT NATIONAL SERVICES INC	525,004	Environmental services
PIVOTAL ENGINEERING LLC	429,242	Facilities
MESSAGE BROADCAST COM	425,537	Customer messaging
B&B ELECTRICAL & UTILITY CONTRACTORS	424,401	IT/Telecom
PARACHUTE CONSULTING LLC	374,802	Safety
EASTEX TOWER LLC A DELAWARE LIMITED	266,496	IT/Telecom
GUIDANT GROUP INC	245,692	Distribution support
PIKE ELECTRIC LLC	224,784	Damage assessment
RENEW INTERNATIONAL LLC	221,115	Invoice auditing
USIC LOCATING SERVICE LLC	182,975	Location services
PIKE CORPORATION DBA PIKE ENGINEERING	164,987	Damage assessment
ENHANCED ENVIRONMENTAL AND EMERGENCY	161,044	Environmental services
JACKSON EXCAVATING & LEASING CO INC	154,741	Equipment rental
CUSHMAN & WAKEFIELD OF TX INC	152,491	Facilities
ELLIS CREATIVE GROUP INC	150,130	Photography
HUGG & HALL EQUIPMENT	137,741	Equipment rental
CHARAH LLC	98,941	Environmental services
CRUMP WILSON ARCHITECTS LLC	91,960	Facilities
DISASTER RESOURCE GROUP LLC	85,238	Staging services
ALORICA INC	70,588	Call center support
REMOTE INSPECTION TECHNOLOGIES LLC	68,774	Damage assessment
CAPITOL ULTRASONICS LLC	68,027	Damage assessment
CITY OF RAYNE	61,334	Security
TOTAL SAFETY US INC	60,918	Safety
MORRISON SURVEYING INC	57,638	ROW support
STANLEY REUTER ROSS THORTON & ALFORD LLC	50,909	Outside Legal Services
SOUTHERN TIRE MART LLC	49,088	Transportation
HB NEILD & SONS INC	44,961	Facilities
ORG GC MIDCO LLC DBA GC SERVICES LIMITED	42,445	Call center support
ANGELLE & DONOHUE PARTNERSHIP	42,300	ROW support
JOHNKER INC DBA EMERGENCY POWER SERVICE	34,959	IT/Telecom
AIR ENVIRONMENTAL SERVICES INC	34,341	Facilities
HOLSTED OPERATIONS INC	31,122	IT/Telecom
ARKANSAS ANALYTICAL INC	28,419	Environmental services
A-LINE TDS INC	24,939	Environmental services
WENDELL WHITE INC	24,282	IT/Telecom
LINDSEY A JANIES DBA LINDSEY JANIES	22,244	Photography
SIMON ROOFING & SHEET METAL CORP	19,669	Facilities

<sup>1</sup> Amounts shown in exhibit do not reflect adjustments or estimates.

Distribution Other Contractors <sup>1</sup>

Hurricane Laura		
Vendor Name	Cost	Service Provided
CONSUMERS ENVIRONMENTAL SERVICES	19,635	Environmental services
H&E EQUIPMENT SERVICES INC	19,448	Equipment rental
AVIAT US INC	17,995	IT/Telecom
J3 COMMUNICATIONS LLC	16,931	IT/Telecom
REPUBLIC SERVICES NATIONAL ACCOUNTS LLC	16,240	Waste hauling
GILL INDUSTRIES LTD	15,500	Facilities
CITIBANK USA NA	15,339	Various
BANNISTER ELECTRIC LLC	15,247	Facilities
THOMAS BECK	15,131	Photography
VOLT POWER LLC	13,174	Damage assessment
BAMBURG STEEL BUILDINGS INC	12,615	Facilities
QUESTLINE INC	12,177	Customer messaging
CMN TITLE & ACQUISITIONS LLC	10,389	ROW support
TECHNICAL ENVIRONMENTAL SERVICES INC	10,227	Environmental services
HOTARD COACHES INC	8,750	Transportation
CONVERGENT OUTSOURCING INC	8,291	Call center support
INDUSTRIAL ROOFING & CONSTRUCTION LLC	8,160	Facilities
STAR SERVICE INC OF BATON ROUGE	7,552	IT/Telecom
DUGGINS WREN MANN & ROMERO LLP	6,746	Outside Legal Services
JS HELD LLC	6,615	Environmental services
STUART C IRBY CO	5,947	Misc contract labor
ELITE SERVICE RECOVERY & TOWING LLC	5,572	Transportation
HEADWATERS INC	5,518	Environmental services
ORLEANS IMAGE CONSULTING LLC	5,471	Photography
COPELAND ELECTRIC CO LLC	5,452	IT/Telecom
POWER GRID SUPPLY LLC	5,252	Facilities
HAGAN FENCE COMPANY	5,100	Facilities
MORGAN LEWIS & BOCKIUS LLP	5,100	Legal services
TIM MORTON & ASSOC INC	4,810	Environmental services
MBO PARTNERS INC	3,702	IT/Telecom, IT support
VECTA ENVIRONMENTAL SERVICES LLC	3,659	Environmental services
MOREHOUSE PARISH SHERIFFS OFFICE	3,435	Security
ELECTRICAL ENGINEERING PROFESSIONAL	3,135	IT/Telecom
MCCONNELL HEAVY HAULING INC	3,107	Freight management
SOUTH TEXAS CELLULAR SERVICES INC	2,400	IT/Telecom
JEFcoat FENCE CO	2,316	Facilities
MIDSTATE LLC	2,150	Transportation
MARLEY ANDREW MENCER DBA A&M FARMS	1,465	Freight management
SET ENVIRONMENTAL INC	1,420	Environmental services
BRIAN WATSON	1,111	Security, Transportation
BFI LITTLE DIXIE LANDFILL NO L38	1,083	Environmental services
TAYLOR POWER SYSTEMS	975	IT/Telecom
ALORICA CUSTOMER CARE LLC	766	Call center support
LAKE CHARLES ALIGNMENT & BRAKE	607	Transportation
WAYPOINT ANALYTICAL MISSISSIPPI INC	580	Environmental services
HCL AMERICA INC	546	Facilities
ROADRUNNER TOWING & RECOVERY	458	Transportation
RUDY SMITH SERVICE INC	426	Transportation
CONTINENTAL TIRE THE AMERICAS LLC	394	Transportation
JODY MCKOIN GENERATOR SERVICE LLC	387	IT/Telecom
LAUREN VINCENT	110	ROW support
CITY BLUEPRINT & SUPPLY CO	99	IT/Telecom

\$82,177,072

<sup>1</sup> Amounts shown in exhibit do not reflect adjustments or estimates.

Hurricane Delta		
Vendor Name	Cost	Service Provided
D M BASS INC	5,970,222	Investment recovery
ROWC LLC DBA DIAMOND D INDUSTRIES	3,977,582	Investment recovery
ABC PROFESSIONAL TREE SERVICES INC	3,678,557	Investment recovery
MACRO COMPANIES INC	2,454,697	Vehicle fuel
MID-CON ENERGY SERVICES INC	2,175,802	Damage assessment
ONESOURCE RESTORATION LLC	1,846,732	Damage assessment
WOODSON INC	1,758,548	Investment recovery
VRP GROUP INC DBA REGIUS DBA VERTUS	657,429	Security
TECHSERV CONSULTING & TRAINING LTD	536,822	Damage assessment
CENTRAL ARKANSAS SCOUTING AND DESIGN	334,755	Damage assessment
MESSAGE BROADCAST COM	255,585	Customer messaging
SOUTHERN ELECTRIC CORP	186,639	Investment recovery
OSMOSE UTILITIES SERVICES INC	174,131	Damage assessment
PROFORCE LLC	149,323	Investment recovery
WASTE MANAGEMENT NATIONAL SERVICES INC	111,949	Environmental services
ENHANCED ENVIRONMENTAL AND EMERGENCY	94,687	Environmental services
REMOTE INSPECTION TECHNOLOGIES LLC	92,235	Damage assessment
LOFTON SECURITY SERVICES INC	78,261	Security
CAVU MEDIA LLC	70,950	Damage assessment
SOUTH SIDE SERVICES INC	57,609	Environmental services
DISASTER RESOURCE GROUP LLC	52,828	Staging services
VECTA ENVIRONMENTAL SERVICES LLC	49,495	Environmental services
ALORICA INC	44,503	Call center support
PARACHUTE CONSULTING LLC	42,075	Safety
CUSHMAN & WAKEFIELD OF TX INC	26,932	Facilities
T BAKER SMITH LLC	24,978	Damage assessment
ORG GC MIDCO LLC DBA GC SERVICES LIMITED	19,096	Call center support
ELLIS CREATIVE GROUP INC	12,800	Photography
CONVERGENT OUTSOURCING INC	9,343	Call center support
GUIDANT GROUP INC	8,252	Distribution support
CITIBANK USA NA	6,977	Various
BRIAN WATSON	5,688	Transportation, Security
LINDSEY A JANIES DBA LINDSEY JANIES	5,433	Photography
HUGG & HALL EQUIPMENT	4,395	Equipment rental
QUESTLINE INC	4,319	Customer messaging
PACE ANALYTICAL SERVICES LLC	4,128	Environmental services
A-LINE TDS INC	3,345	Environmental services
SOUTHERN TIRE MART LLC	3,079	Transportation
ORLEANS IMAGE CONSULTING LLC	3,026	Photography
MOREHOUSE PARISH SHERIFFS OFFICE	2,070	Security
SOUTH TEXAS CELLULAR SERVICES INC	825	IT/Telecom
WAYNES TRACTOR SERVICE	500	Equipment rental
JODY MCKOIN GENERATOR SERVICE LLC	497	IT/Telecom
ALORICA CUSTOMER CARE LLC	444	Call center support
ELECTRICAL ENGINEERING PROFESSIONAL	165	IT/Telecom
	24,997,706	

<sup>1</sup> Amounts shown in exhibit do not reflect adjustments or estimates.

Hurricane Zeta		
Vendor Name	Cost	Service Provided
ONESOURCE RESTORATION LLC	12,059,495	Damage assessment
WOODSON INC	5,092,297	Investment recovery
D M BASS INC	2,988,049	Investment recovery
MACRO COMPANIES INC	2,208,535	Vehicle Fuel
SOUTHERN ELECTRIC CORP	1,311,448	Investment recovery
PROFORCE LLC	1,255,153	Investment recovery
STORM SERVICES LLC	840,076	Damage assessment
VRP GROUP INC DBA REGIUS DBA VERTUS	358,672	Security
ABC PROFESSIONAL TREE SERVICES INC	279,798	Investment recovery
MESSAGE BROADCAST COM	233,710	Customer messaging
VECTA ENVIRONMENTAL SERVICES LLC	211,017	Environmental services
LOFTON SECURITY SERVICES INC	206,145	Security
EDG INC	110,574	Safety
ORG GC MIDCO LLC DBA GC SERVICES LIMITED	103,961	Call center support
UNITED STATES ENVIRONMENTAL SERVICES LLC	100,520	Environmental services
ALORICA INC	91,497	Call center support
CUSHMAN & WAKEFIELD OF TX INC	80,957	Facilities
RIVER BIRCH LLC	51,491	Environmental services
PARACHUTE CONSULTING LLC	43,815	Safety
CAVU MEDIA LLC	37,400	Damage assessment
T BAKER SMITH LLC	32,830	Damage assessment
GUIDANT GROUP INC	30,721	Distribution support
DISASTER RESOURCE GROUP LLC	26,001	Staging services
LAND MANAGEMENT SERVICES LLC	25,038	ROW support
HUGG & HALL EQUIPMENT	20,281	Equipment rental
LANDMARK SURVEYING INC	18,058	ROW support
A-LINE TDS INC	16,393	Environmental services
SOUTHERN TIRE MART LLC	15,875	Transportation
LOONEYS TIRE SERVICE DBA LTS WHOLESALE	14,350	Transportation
MOREAU REFRIGERATION & HEATING INC	12,430	Facilities
HOLSTED OPERATIONS INC	11,174	Facilities
CONVERGENT OUTSOURCING INC	8,265	Call center support
AMERICAN MACHINERY MOVERS INC	8,170	Equipment rental
CITIBANK USA NA	7,071	Various
QUESTLINE INC	6,445	Customer messaging
FAST 5 CONSTRUCTION SERVICES INC	5,772	Facilities
RENT-A-COP DETAIL SERVICES LLC	4,920	Security
ELLIS CREATIVE GROUP INC	4,914	Photography
THOMAS BECK	4,705	Photography
MARK BERGERON	4,199	Photography
ORLEANS IMAGE CONSULTING LLC	3,546	Photography
WASTE MANAGEMENT NATIONAL SERVICES INC	3,424	Environmental services
THE THREE CS PROPERTIES INC	1,980	Facilities
BRIAN WATSON	1,659	Transportation, Security
MBO PARTNERS INC	1,349	IT support
HOWARD DEDICATED OPERATIONS INC	1,210	Freight management
CONTINENTAL TIRE THE AMERICAS LLC	628	Transportation
ALORICA CUSTOMER CARE LLC	443	Call center support
PACE ANALYTICAL SERVICES LLC	232	Environmental services
	27,956,694	

<sup>1</sup> Amounts shown in exhibit do not reflect adjustments or estimates.

**Distribution Materials Vendors**

<b>Hurricane Laura</b>	
<b>Vendor Name</b>	<b>Cost</b>
ELL Inventory	40,572,984
DISASTER RESOURCE GROUP LLC	11,901,250
LODGING SOLUTIONS LLC	2,798,250
MACRO COMPANIES INC	2,733,783
THOMASSON COMPANY	2,497,600
QUALTEK RECOVERY LOGISTICS LLC	1,834,608
STORM SERVICES LLC	1,706,523
BASE LOGISTICS LLC	908,872
HORNBECK OFFSHORE SERVICES INC DBA	809,041
WALKER & ASSOC INC	287,842
ARBOR RESOURCES LLC	272,012
HUBBELL POWER SYSTEMS INC	225,792
CENTERPOINT ENERGY	121,295
AVIAT US INC	113,373
CITIBANK USA NA	100,012
WESCO DISTRIBUTION INC	57,668
AFL TELECOMMUNICATIONS LLC	46,931
TEMPEST TELECOM SOLUTIONS	34,414
THE THREE CS PROPERTIES INC	32,055
DOGGETT FREIGHTLINER OF ARKANSAS LLC	28,973
WENDELL WHITE INC	26,699
BANNISTER ELECTRIC LLC	24,456
RLH INDUSTRIES INC	24,275
STAR SERVICE INC OF BATON ROUGE	23,710
GRAYBAR ELECTRIC COMPANY INC	23,655
SOUTHERN STATES LLC	23,455
AMERICAN MACHINERY MOVERS INC	19,615
CROSS-COUNTRY CONTRACTORS INC	17,484
EDM INTL INC	17,436
HB NEILD & SONS INC	14,977
T&C SPECIALTY DISTRIBUTORS INC	14,781
STUART C IRBY CO	11,744
DIS-TRAN STEEL LLC	11,724
AMERICAN EXPRESS TRAVEL RELATED SERVICES	9,714
HAGAN FENCE COMPANY	7,512
JM TEST SYSTEMS INC	6,095
BAMBURG STEEL BUILDINGS INC	5,864
GRAINGER INC	5,502
JEFCOAT FENCE CO	4,962
AUTO PARTS & SUPPLIES LLC DBA NAPA AUTO	4,150
PREMIER TRUCK RENTAL LLC	3,972
UNITED STATES ENVIRONMENTAL SERVICES LLC	3,292
JOHNKER INC DBA EMERGENCY POWER SERVICE	1,556
STS INDUSTRIAL INC	549
AIRWAYS FREIGHT CORP	438
RADIO PARTS INC	204
COPELAND ELECTRIC CO LLC	184
WHITE, JONATHAN KIRBY	114
NAVO JR., MICHAEL D	74
SCHWEITZER ENGINEERING LABORATORIES	67

67,391,535

Hurricane Delta	
Vendor Name	Cost
ELL Inventory	7,914,693
DISASTER RESOURCE GROUP LLC	2,161,937
MACRO COMPANIES INC	416,374
COTTON COMMERCIAL USA INC	55,916
CITIBANK USA NA	41,298
STUART C IRBY CO	37,756
RLH INDUSTRIES INC	12,196
AMERICAN EXPRESS TRAVEL RELATED SERVICES	1,184
WESCO DISTRIBUTION INC	982
LAFONT,DEANNA DUET	290
	<hr/>
	10,642,626



Hurricane Zeta	
Vendor Name	Cost
ELL Inventory	11,501,563
CATERING CAJUN LLC	3,721,243
MACRO COMPANIES INC	422,824
KNOWLEDGE VINE LLC	103,462
STUART C IRBY CO	24,345
WESCO DISTRIBUTION INC	23,985
CITIBANK USA NA	23,377
WALKER & ASSOC INC	11,251
AMERICAN EXPRESS TRAVEL RELATED SERVICES	8,918
NOLAN POWER GROUP LLC	5,012
THE THREE CS PROPERTIES INC	1,200
DELTA ELECTRONICS CO	358
KITCHENS, ROGER C	56
	<hr/>
	15,847,593

**Distribution Estimated Costs**

<b>Hurricane Laura</b>		
<b>Vendor Name</b>	<b>Cost</b>	<b>Service Provided</b>
Uniti	1,000,500	Fiber
D M BASS INC	733,579	Investment recovery
FUGRO USA LAND INC	670,000	LIDAR
PRIMORIS T&D SERVICES LLC	493,526	Line contractor
ULCS	250,000	Fiber route engineering
Aviat	120,000	Fiber
Deloitte	120,000	Attestation services
Renew	100,000	CIPT
Foster	84,430	Fiber
B&B Electric	50,000	IT/Telecom
Conterra	20,000	Fiber
Wendell White	17,000	Fiber
Alpine Power Systems	10,000	Portable generators
SERVICE ELECTRIC	(34,246)	Line contractor
DISASTER RESOURCE GROUP LLC	(183,830)	Logistics
STORM SERVICES LLC	(215,420)	Logistics
LODGING SOLUTIONS LLC	(404,005)	Logistics
	<u>2,831,535</u>	

Hurricane Delta		
Vendor Name	Cost	Service Provided
Uniti	1,300,000	Fiber
Foster	458,577	IT/Telecom
D M BASS INC	291,792	Investment recovery
Eastex	135,538	IT/Telecom
Deloitte	120,000	Attestation services
Revenew	100,000	CIPT
Fiber Bond	72,980	IT/Telecom
Guidant/EEPS	15,000	IT/Telecom
Entergy	10,000	Internal labor
Amerigas	5,000	IT/Telecom
	<u>2,508,887</u>	

Hurricane Zeta		
Vendor Name	Cost	Service Provided
D M BASS INC	1,105,588	Investment recovery
Deloitte	120,000	Attestation services
Revenew	100,000	CIPT
Preferred Sales	27,997	Fiber
Traffic Control Products of LA	4,411	IT/Telecom
	1,357,996	