



Louisiana Public Service Commission

POST OFFICE BOX 91154
BATON ROUGE, LOUISIANA 70821-9154
lpsc.louisiana.gov

Telephone: (225) 342-4439

COMMISSIONERS

Mike Francis, Chairman
District IV
Eric F. Skrmetta, Vice Chairman
District I
Foster L. Campbell
District V
Davante Lewis
District III
Jean-Paul P. Coussan
District II

BRANDON M. FREY
Executive Secretary

KATHRYN H. BOWMAN
Executive Counsel

JOHNNY E. SNELGROVE, JR
Deputy Undersecretary

Certified Mail Receipt # 9589 0710 5270 1532 6171 90

LOUISIANA PUBLIC SERVICE COMMISSION

VS

DOCKET NO. T-37730

PACK DAT & GEAX MOVERS, LLC

In re: Alleged violation of 1) Order T-37084 and 2) Louisiana Revised Statutes 45: 164(E) and General Orders dated April 03, 2008 as amended and March 16, 2021 by engaging in activities related to transporting household goods intrastate without LPSC authority on or about September 15, 2025.

TO: Pack Dat & Geaux Movers, LLC
1253 Angus Dr
Harvey, LA 70058

GREETINGS:

YOU ARE HEREBY NOTIFIED, COMMANDED AND REQUIRED to appear at a hearing on Wednesday, November 05, 2025 at 9:30 a.m., before a Louisiana Public Service Commission Administrative Law Judge. The hearing will be held at the Louisiana Public Service Commission, Galvez Building, 11th Floor, 602 North 5th Street, Baton Rouge, Louisiana, 70802. Parking is available in the Galvez Parking Garage across from the Galvez Building on North Street.

TO SHOW CAUSE, if any, why you should not be found guilty by the Commission violation of 1) Order T-37084 and 2) Louisiana Revised Statutes 45: 164(E) and General Orders dated April 03, 2008 as amended and March 16, 2021 by engaging in activities related to transporting household goods intrastate without LPSC authority on or about September 15, 2025; and for further order or orders as the Commission may deem necessary in the premises.

No later than fifteen (15) days before the date of the scheduled hearing, **any party** to this proceeding may request a **status conference** to discuss the issues herein. The request must be in writing and filed in the same manner as a request for continuance. At the hearing, the Commission Staff will present testimony and evidence in support of its allegations against you. You will be provided an opportunity to cross-examine Commission Staff's witness(es) and to present evidence and testimony in your defense. You will need to bring an original and four (4) copies of each document you wish to place into evidence.

DOCKET NO. T-37730
LOUISIANA PUBLIC SERVICE COMMISSION VS.
PACK DAT & GEAX MOVERS, LLC
MAIL OUT DATE: SEPTEMBER 19, 2025
PUBLISHED IN BULLETIN #1359 ON SEPTEMBER 26, 2025

PLEASE BE ADVISED that any requests to reschedule this hearing will be considered if the request meets the following four (4) requirements:

1. One original and two copies of the request must be mailed, hand delivered or faxed to the Commission's Records and Recordings Division at the following address:

Mail:

Louisiana Public Service Commission
Records and Recording Division
P.O. Box 91154
Baton Rouge, Louisiana 70821-9154

Hand Delivery:

Louisiana Public Service Commission
Records and Recording Division
602 North Fifth Street
Galvez Building, 12th Floor
Baton Rouge, Louisiana

Fax¹:

Louisiana Public Service Commission
Records and Recording Division
(225) 342-0877

2. The Records and Recordings Division must receive the request at least five (5) business days prior to the hearing date;
3. The request must contain the proceeding's docket number and the name of the party requesting the continuance; and
4. The request must also contain good cause for the requested continuance.

If you have questions concerning the scheduled hearing, you may contact the Administrative Hearings Division at (225) 219-9417. Also, if you are disabled and need special accommodation at the hearing, please notify the Administrative Hearings Division at least five (5) days prior to the hearing date.



BY ORDER OF THE COMMISSION
BATON ROUGE, LOUISIANA
SEPTEMBER 18, 2025

A handwritten signature in black ink, appearing to read "Tammy Burl", is written over a horizontal line.

TAMMY BURL
TRANSPORTATION ADMINISTRATOR
LOUISIANA PUBLIC SERVICE COMMISSION

¹ Filings of twenty-five (25) pages or less by facsimile are now allowed provided that they are in compliance with the procedures detailed in Rule 3 of the Commission's Rules of Practice and Procedure. A filing is complete only upon receipt of a confirmation from the Records Division confirming complete transmission, and the receipt by the Records Division, within five days of the transmission, of the original signed document accompanied by a \$25 filing fee. Facsimile must be received by 4:30 on a business day to be considered filed that day. If a party fails to comply with the rules regarding facsimile filings, the filing shall have no force and effect. For further information contact the Louisiana Public Service Commission at 1-800-256-2397 and request the Records and Recordings Division. You may access the Commission Rules of Practice and Procedure on our website at <https://lpsc.louisiana.gov/>.

SERVICE LIST

DOCKET NO. T-37730

LOUISIANA PUBLIC SERVICE COMMISSION VS.

PACK DAT & GEAUX MOVERS, LLC

MAIL OUT DATE: SEPTEMBER 19, 2025

PUBLISHED IN BULLETIN #1359 ON SEPTEMBER 26, 2025

Certified Mail Receipt # 9589 0710 5270 1532 6171 90

Pack Dat & Geaux Movers, LLC
1253 Angus Dr
Harvey, LA 70058

Staff Attorney

Transportation Staff

Commissioner Skrmetta

Commissioner Lewis

LOUISIANA PUBLIC SERVICE COMMISSION

ORDER NUMBER T-37084

LOUISIANA PUBLIC SERVICE COMMISSION
VS.
PACK DAT & GEAUX MOVERS, LLC

Docket No. T-37084, In Re: Alleged violation of La. R.S. 45:161 through 180.1, by engaging in activities related to moving household goods prior to complying with the requirements of La. R.S. 45:164 (E) and General Order dated March 16, 2021 and for failure to comply with the requirements of General Order dated April 3, 2008 as amended.

(Decided at the March 27, 2024 Business and Executive Session)

I. Background

In response to a complaint, the Louisiana Public Service Commission (“LPSC” or “Commission”) Staff opened an investigation into Pack Dat & Geaux Movers, LLC (“Pack Dat” or “Carrier”) and its business activities. As a result of this investigation, Staff found evidence that Pack Dat had violated La. R.S. 45:161 through 180.1. by engaging in activities related to moving household goods prior to complying with the requirements of La. R.S. 45:164 (E) and General Order dated March 16, 2021 and for failure to comply with the requirements of General Order dated April 3, 2008 as amended. Staff subsequently issued a citation to Pack Dat in the present docket.

II. Jurisdiction

The Commission exercises jurisdiction over common carriers and public utilities in Louisiana pursuant to Article IV, Section 21(B) of the Louisiana Constitution, which states:

“The commission shall regulate all common carriers and public utilities and have such other regulatory authority as provided by law. It shall adopt and enforce reasonable rules, regulations, and procedures necessary for the discharge of its duties, and shall have other powers and perform other duties as provided by law.”

Pursuant to this authority, the Commission has issued General Order dated March 16, 2021, which provides for the requirements a household goods carrier must satisfy to operate within the State of Louisiana, and General Order dated April 3, 2008, as amended, which requires that all household goods carriers operating intrastate in Louisiana must include their legal and/or registered name and physical address in all advertising.

Further, LA. R.S. 45:164(E) provides that “[a]ll intrastate movers of household goods shall be required to apply for and secure a common carrier certificate from the Louisiana Public Service Commission ... prior to engaging in any activities related to moving household goods.”

**III. Stipulation **

In response to the citation, Jamar Spencer, Sr., operations manager of the Carrier, executed an Affidavit and Stipulation on behalf of the company admitting to violating all violations within the citation. In the Affidavit and Stipulation, Mr. Spencer agreed to the imposition of a \$1,000.00 fine and a \$25.00 citation fee with \$500.00 of the fine suspended conditioned on the following conditions:

1. Not being found guilty, entering a plea of guilty, or entering a plea of no contest to any of the rules and regulations of the Commission for a period of one (1) year from the date of the executed Affidavit and Stipulation. The fines and fees totaling \$525.00 will be paid by February 29, 2024;
2. Execute the Affidavit and Stipulation before a notary and return to LPSC Transportation Staff by February 29, 2024;
3. Cease engaging in activities related to moving household goods including the advertising for such services until such time as a Common Carrier Certificate is issued to Pack Dat & Geaux Movers, LLC;
4. Pack Dat & Geaux Movers, LLC will file an application with the LPSC for the transportation of household good intrastate no later than February 29, 2024; and,
5. Failure to comply with any of the above requirements will result in the \$500.00 suspended portion of the fine becoming due immediately.

IV. Commission Action

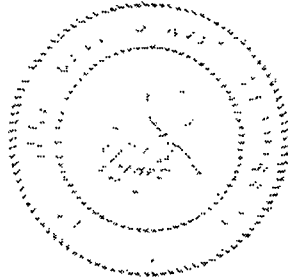
On motion of Chairman Francis, seconded by Commissioner Greene, and unanimously adopted, the Commission voted to assert its original and primary jurisdiction and take the matter up pursuant to Rule 57.

On motion of Chairman Francis, seconded by Vice Chairman Lewis, and unanimously adopted, the Commission voted to accept the Affidavit and Stipulation executed on February 23, 2024 for fines and fees totaling \$525.00.

IT IS THEREFORE ORDERED THAT:

1. The Affidavit and Stipulation executed on February 23 2024, for fines and fees totaling \$525.00 is accepted; and,
2. This Order is effective immediately.

BY ORDER OF THE COMMISSION
BATON ROUGE, LOUISIANA
April 25, 2024



Brandon M. Frey
BRANDON M. FREY
SECRETARY

Mike Francis

DISTRICT IV
CHAIRMAN MIKE FRANCIS

Davante Lewis

DISTRICT III
VICE CHAIRMAN DAVANTE LEWIS

Foster L. Campbell

DISTRICT V
COMMISSIONER FOSTER L. CAMPBELL

Eric Skrmetta

DISTRICT I
COMMISSIONER ERIC SKRMETTA

Craig Greene

DISTRICT II
COMMISSIONER CRAIG GREENE

**State of
Louisiana
Secretary of
State**



**COMMERCIAL DIVISION
225.925.4704**

Fax Numbers
225.932.5317 (Admin. Services)
225.932.5314 (Corporations)
225.932.5318 (UCC)

Name	Type	City	Status
PACK DAT & GEAUX MOVERS, LLC	Limited Liability Company	SLIDELL	Active

Previous Names

Business: PACK DAT & GEAUX MOVERS, LLC

Charter Number: 44949174K

Registration Date: 5/24/2022

Domicile Address

330 OAK HARBOR BLVD. SUITE 1013
BLDG
SLIDELL, LA 70461

Mailing Address

1253 ANGUS DR.
HARVEY, LA 70058

Status

Status: Active

Annual Report Status: Not In Good Standing for failure to file Annual Report

File Date: 5/24/2022

Last Report Filed: 6/30/2023

Type: Limited Liability Company

Registered Agent(s)

Agent: JAMAR SPENCER
Address 1: 1253 ANGUS DR
City, State, Zip: HARVEY, LA 70058
Appointment Date: 5/24/2022

Agent: IREIAN GODFREY
Address 1: 1253 ANGUS DR
City, State, Zip: HARVEY, LA 70058
Appointment Date: 2/20/2024

Officer(s)

Additional Officers: No

Officer: JAMAR SPENCER
Title: Manager, Member
Address 1: 1253 ANGUS DR

City, State, Zip: HARVEY, LA 70058

Amendments on File (1)

Description	Date
Domestic LLC Agent/Domicile Change	2/20/2024

Print



Your Premier Slidell Moving Company

Pack Dat & Geaux Movers delivers reliable moving services in Slidell, LA, and surrounding areas. As a dependable moving company, we ensure every move is smooth and stress-free.

(504) 373-7230



Effortless Moves to or From Slidell with a Locally Owned Moving Company

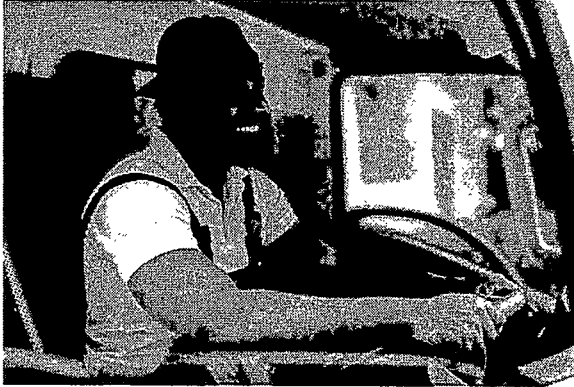
Pack Dat & Geaux Movers simplifies the relocation process, making every transition smooth and stress-free. Recognized as a trusted moving company in Slidell, we specialize in family-friendly moving services that prioritize care and efficiency.

- Our detailed 5-step process includes preparation, professional packing, efficient loading, safe transportation, and careful placement in your new space.
- Each step is designed to ensure your belongings are treated with the utmost respect and handled as if they were our own.

Choose Pack Dat & Geaux Movers for your Slidell relocation needs. Request a free estimate today and enjoy a seamless experience from start to finish.

To Get Started Call [504-373-7230](tel:504-373-7230)





Streamlined 5-Step Moving Process by a Dependable Slidell Moving Company

At Pack Dat & Geaux Movers, our simple 5-step process ensures a seamless and efficient relocation experience. As experienced movers, we handle every detail to protect your belongings and make your move stress-free.

1. **Prepare** – All necessary materials and tools, including bubble wrap, boxes, blankets, screwdrivers, and wrenches, are supplied to get everything ready.
2. **Pack** – Beyond relocation, we assist with careful packing before the move begins. This step may take one or two days and includes flat-rate services for dismantling and reassembling furniture and equipment.
3. **Load** – Items are meticulously stacked and arranged for maximum safety, ensuring they stay secure during transport. Our movers bring expertise and precision to every load.
4. **Transport** – Weather conditions and traffic are closely monitored to ensure safe and timely delivery, keeping you informed throughout the journey.
5. **Move-In** – Every item is carefully placed in your new space, working closely with you to create that first feeling of home.



From Residential to Commercial Moves in Slidell or Nearby, We've Got Every Detail Covered for You.

Comprehensive Moving Services Tailored to Your Needs

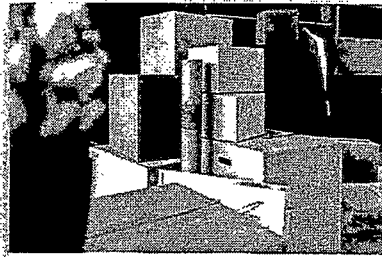


Residential Moving Service

At Pack Dat & Geaux Movers, we understand that moving is more than transferring items, it's about relocating your entire life. We're here to ease the emotional and logistical challenges of residential moves in Slidell.

- Our professional team manages every aspect of your move, whether you're relocating from a cozy studio or a spacious multi-bedroom home.
- We handle all household items with care, from delicate glassware to bulky furniture, ensuring safe and precise transport.

Schedule →

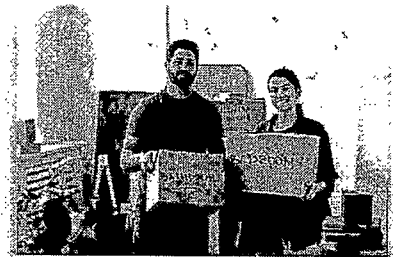


Commercial Moving Service

Commercial moves require specialized skills distinct from residential relocations. At Pack Dat & Geaux Movers, we handle business moves in Slidell with minimal disruption to your daily operations.

- From compact offices to large corporate complexes, our experienced team ensures a smooth transition.
- We expertly manage sensitive equipment, protect confidential documents, and reassemble complex office setups.

Schedule →



College Moving Service

Start your college journey with ease! Our specialized student moving service is perfect for transitions in and out of dorms and apartments.

- We offer a smooth, worry-free delivery solution so you can focus on studies and campus life.
- Our expert team handles your belongings with care, ensuring a seamless move to or from your college campus.

Schedule →

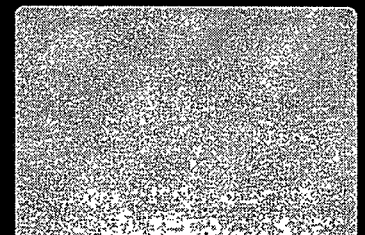
OUR MOVING SERVICES

GET A FREE QUOTE NOW!

Residential Moving Service

Commercial Moving Service

College Moves





Storage Units

Long-Distance

Professional Movers

Office Movers

Get My Free Quote

Name *

First

Last

Phone *

Email *

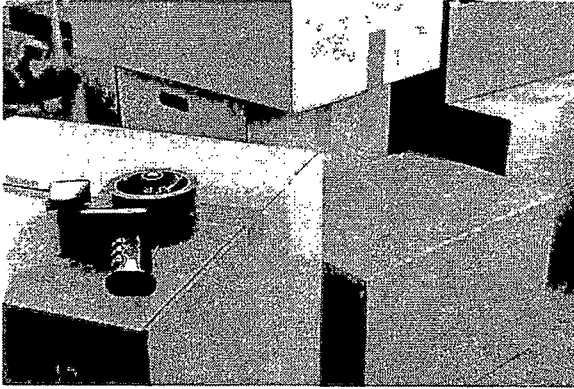
Moving From *

Moving To *

Questions? Let us know your Anticipated Move Date *

Submit

Reviews From Our Happy Customers



Why Choose Pack Dat & Geaux Movers of Slidell

Pack Dat & Geaux Movers takes the stress out of relocation with comprehensive moving services. As a trusted moving company, we manage every detail, from packing to unpacking, ensuring your belongings are safely transported to their destination.

Our transparent pricing eliminates hidden fees, while our punctual team works around your schedule, even for last-minute moves. Specializing in local, long-distance, and commercial relocations, we tailor our services for fragile and oversized items, including pianos and antiques. Here's more reasons to choose us:

- Full-service movers: packing, loading, transport, and unpacking
- Transparent pricing: no hidden fees
- Punctual and flexible scheduling, including last-minute moves
- Local, long-distance, and commercial moving services
- Specialized handling for fragile and oversized items (pianos, antiques, etc.)
- Fully licensed and insured with comprehensive protection plans
- 24/7 customer support with dedicated move coordinators
- Customizable plans tailored to individual needs



Turning New Keys, Creating New Memories—We Move You Forward, One Box at a Time.

Your Premier Slidell Movers Ready to Go

Pack Dat & Geaux Movers proudly offers top-notch moving services in Slidell, Louisiana. Whether you're relocating locally or to the Camellia City on the Northshore, our team ensures a seamless and stress-free experience.



Slidell's Local Moving Experts

- **Local Expertise:** We specialize in local moves, bringing in-depth knowledge of Slidell's neighborhoods for an efficient, professional experience.
- **Long-Distance Moves:** Our skilled long-distance movers ensure safe transport and timely arrival for a hassle-free relocation.
- **Professional Packing Services:** Using high-quality materials, we handle everything from fragile items to large furniture, guaranteeing a stress-free move.

Frequently Asked Questions About Our Moving Company

Moving Company Solutions in Slidell, LA for Homes and Businesses

At Pack Dat & Geaux Movers, we offer professional moving services tailored to your specific needs in Slidell and beyond.

- Whether you're relocating locally around the Honey Island Swamp or Lake Pontchartrain, or long-distance, our team is here to make your transition smooth.
- Our extensive packing services set us apart, with customized quotes to match your unique requirements.
- We're equipped to handle any move, regardless of distance or complexity.

Call us anytime! (504) 373-7230

Location: 330 Oak Harbor Blvd Suite 1013
Slidell, LA 70461

Professional Residential and Commercial Movers with more than 10 Years of Experience

With local expertise, personalized service, and competitive pricing, we make your Slidell move smooth and affordable. Fully licensed and insured, we provide peace of mind and reliable service from start to finish.

Where is your office located?

330 Oak Harbor Blvd Suite 1013
Slidell , LA 70461

How long will it take to move?

How many movers do I need?

What type of payment methods do you accept?

Is the deposit refundable?

PACK DAT & GEAUX MOVERS LLC

At Pack Dat & Geaux Movers, we are more than just a moving company; we are a community-driven service committed to providing professional, respectful, and personalized moving solutions to the diverse families and businesses of Slidell and the Greater New Orleans area.

Phone: (504) 373-7230

Hours. Mon-Sun 7am - 8pm



- [Home](#)
- [Services](#)
- [Blog](#)
- [About Us](#)
- [Testimonials](#)
- [FAQs](#)
- [Contact Us](#)
- [Sitemap](#)

- [Slidell](#)
- [Mandeville](#)
- [Lacombe](#)
- [New Orleans](#)
- [Privacy Policy](#)
- [Nondiscrimination Policy](#)
- [Accessibility Policy](#)

© 2025 Pack Dat & Geaux Movers. All rights reserved.