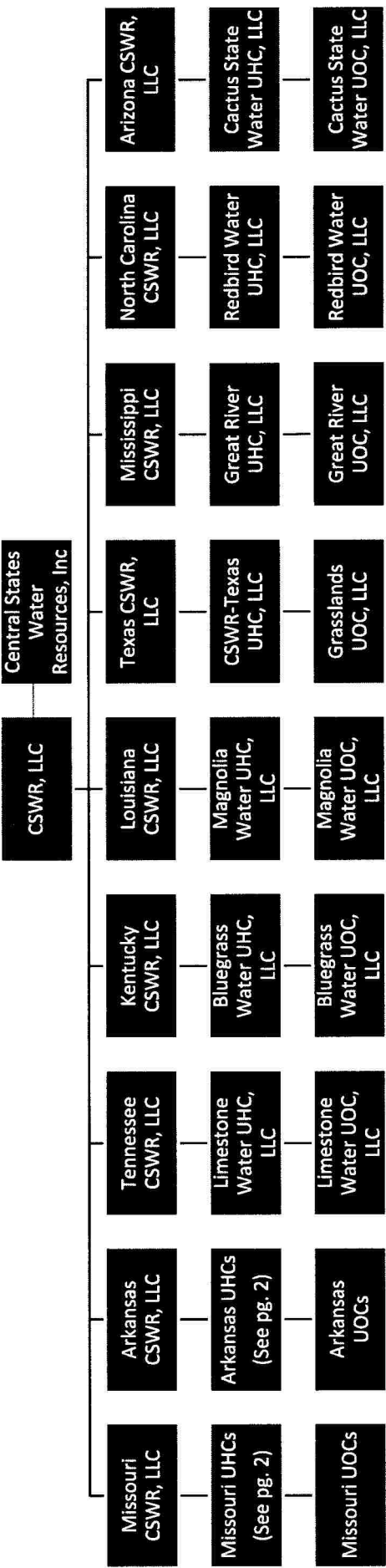


Central States Water Resources Corporate Entity Organizational Chart



Missouri & Arkansas CSWR Organizational Chart Detail

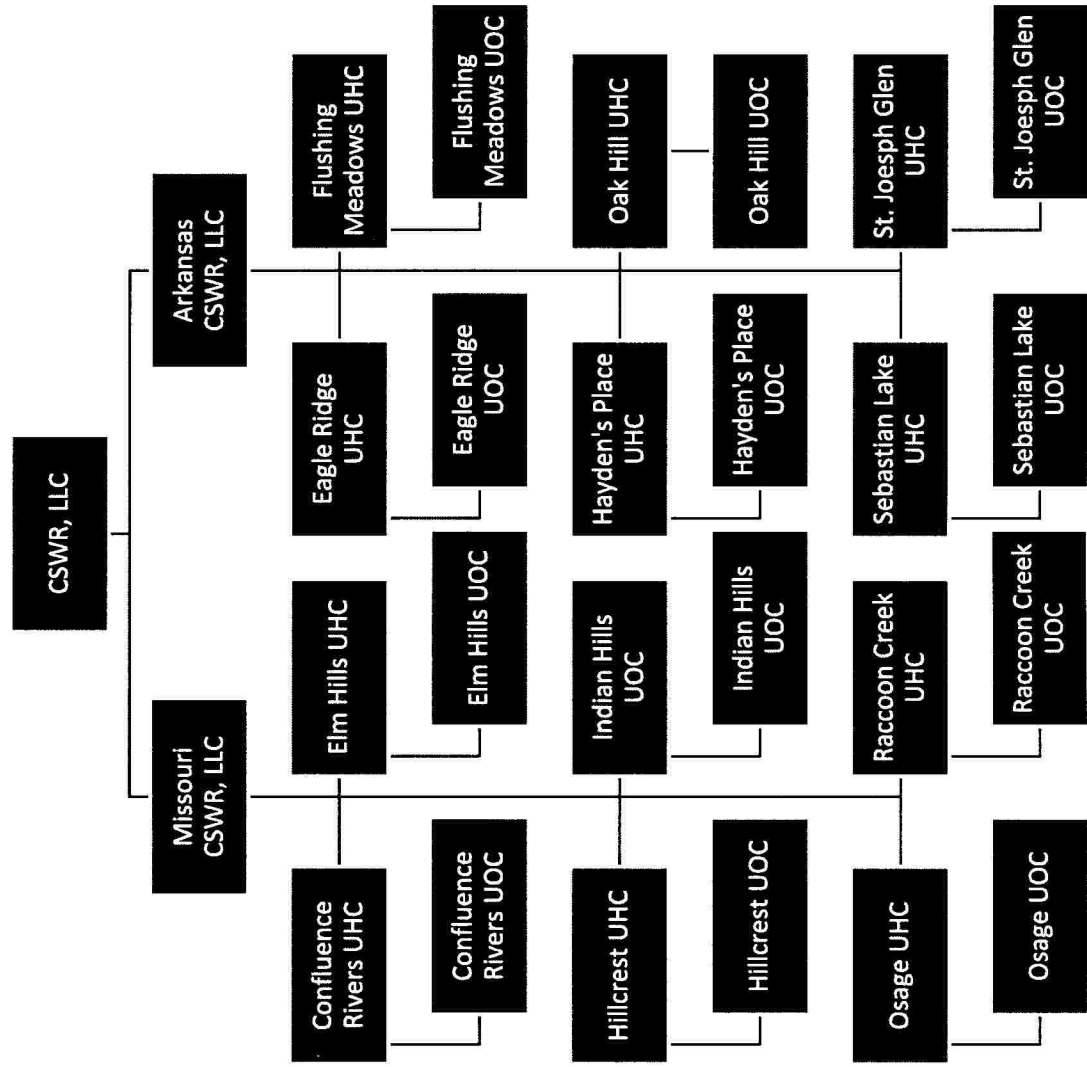


EXHIBIT B - PUBLIC

In accordance with Rule 12.1 of the Louisiana Public Service Commission's Rules of Practice and Procedure, this exhibit has been designated "confidential" and submitted under seal as it contains information regarding strategies employed in contract negotiations and other competitively sensitive information.

EXHIBIT C - PUBLIC

In accordance with Rule 12.1 of the Louisiana Public Service Commission's Rules of Practice and Procedure, this exhibit has been designated "confidential" and submitted under seal as it contains information regarding strategies employed in contract negotiations and other competitively sensitive information.